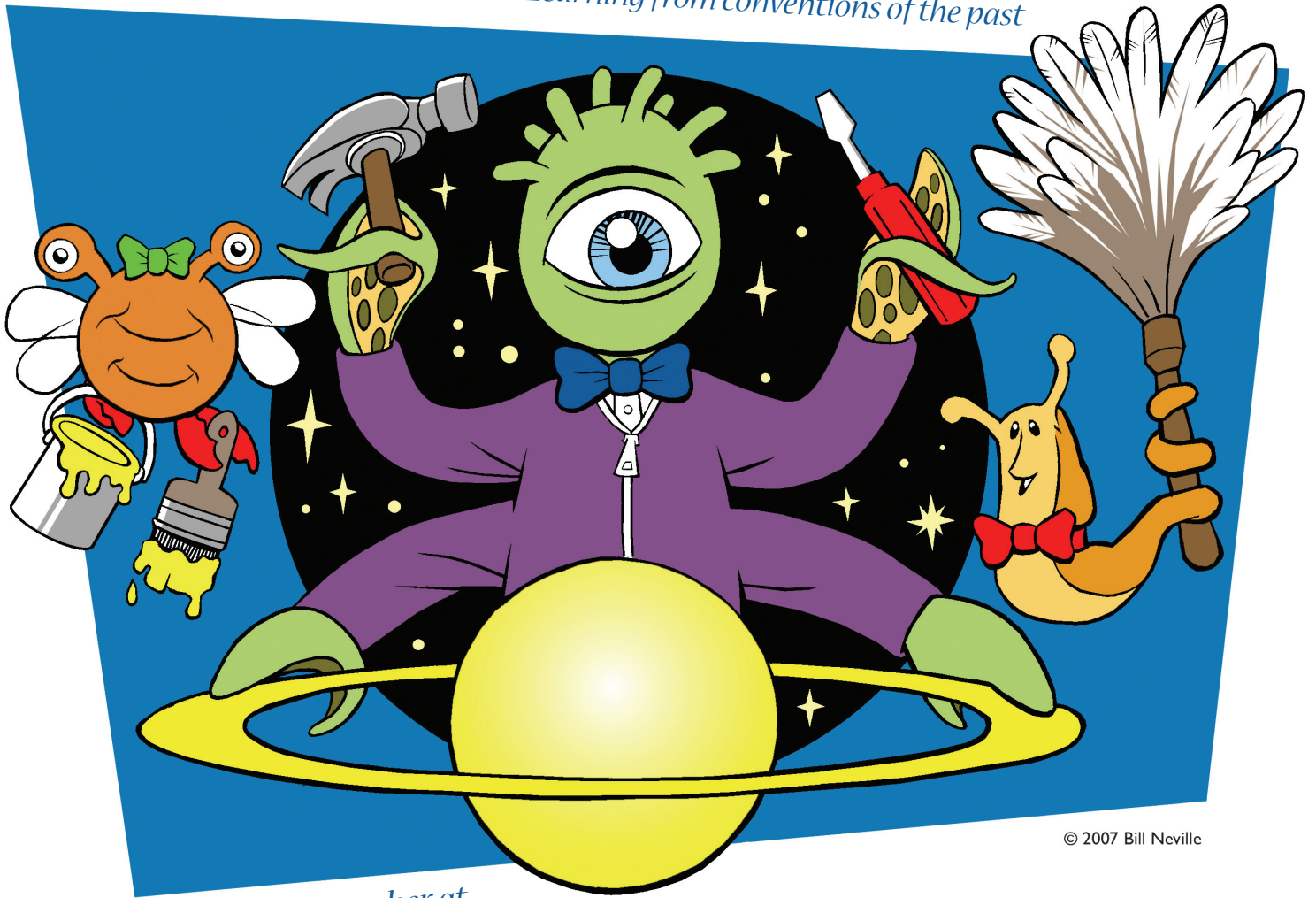


# Smofcon

*Building conventions of the future*

*Learning from conventions of the past*



© 2007 Bill Neville

*Join us this December at*

**Smofcon 25** *December 7-9, 2007*  
*Boston, Massachusetts*

**Smofcon is for science fiction fans from around the world who organize and run conventions.** Some of us are new to convention-running; others have been working on cons for decades. Come for the excellent program; revel in having time for leisurely dinners and long conversations. Sound like fun? It is! Please join us in Boston for Smofcon 25!

*Location: **Hilton Boston Logan Airport***

*Membership: **\$60 through October 31, 2007; \$70 at the door***

*For more information, see reverse side and the Smofcon 25 website*

**[www.mcfi.org/smofcon25](http://www.mcfi.org/smofcon25)**

Brought to you by Massachusetts Convention Fandom, Inc., proud sponsor of Smofcons 3 & 15 (and diverse other fannish gatherings)

# Smofcon 25

December 7-9, 2007  
Boston, Massachusetts



## Hotel: Hilton Boston Logan Airport

The photo shows the Boston skyline as seen from the Smofcon hospitality suite where we'll start gathering on Thursday evening, December 6<sup>th</sup>. The Hilton is a lovely, comfortable hotel, and we have a few innovative ideas for turning the Smofcon space into a lively, fannish town common for the weekend.

Skyways connect the hotel to two Logan terminals, or you can take the free shuttle. The gastronomic, shopping, and historical delights of downtown Boston are a quick taxi or "T" (subway) ride away. It's about 3 miles from the airport to the top of Beacon Hill. We'll also have a Smofcon guide to restaurants in nearby East Boston.

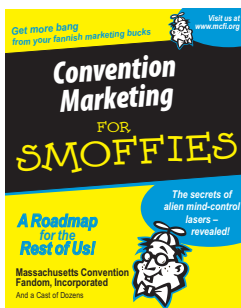
### Reserve your room now!

**Rates: \$118 single/double; \$128 triple; \$138 quad**  
Group/convention code: "mcf"

Further information and links at:

[www.mcfi.org/snofcon/hotel.html](http://www.mcfi.org/snofcon/hotel.html)

## Program: Participatory!



Management Secrets of Attila the Hun are all very well and good, but we think that "Marketing Secrets of Hari Seldon" are just as important in running successful science fiction conventions. So, at this year's Smofcon, we'll focus on marketing, public relations, and advertising – topics relevant to all con-runners. We'll also discuss volunteers, facilities, communication, budgeting, and other topics of interest.

We use the program to share our experiences, questions, problems, and ideas. Program items are informative, lively, and challenging – Smofcon is like grad school for convention runners (without the dissertation, thank Ghu).

Whether this is your first Smofcon or your 25<sup>th</sup>, you're a potential program participant. We all are!

Pre-registration **\$60** through **Oct. 31, 2007**. Registration at the door **\$70**. (Supporting **\$25**).

Please make check (*do not send cash!*) out to: **MCFI, P.O. Box 1010, Framingham, MA 01701**

I am paying \$ \_\_\_\_\_ by: \_\_\_\_\_ check/money order \_\_\_\_\_ VISA \_\_\_\_\_ MasterCard

Credit Card # \_\_\_\_\_ Exp. Date: \_\_\_\_\_

*Your credit card will be charged by NESFA.*

Name on card: \_\_\_\_\_

Signature: \_\_\_\_\_

Name(s) of member(s): \_\_\_\_\_

Address: \_\_\_\_\_

City: \_\_\_\_\_ State: \_\_\_\_\_ Zip/Postal Code: \_\_\_\_\_

Country: \_\_\_\_\_ Email Address: \_\_\_\_\_

Visit us at [www.mcfi.org/snofcon25](http://www.mcfi.org/snofcon25) to buy memberships on our secure server